

TOTO

CONCEALED TANK

CONCEALED TANK

WH131MNF



FEATURES

- Dual Flush System.

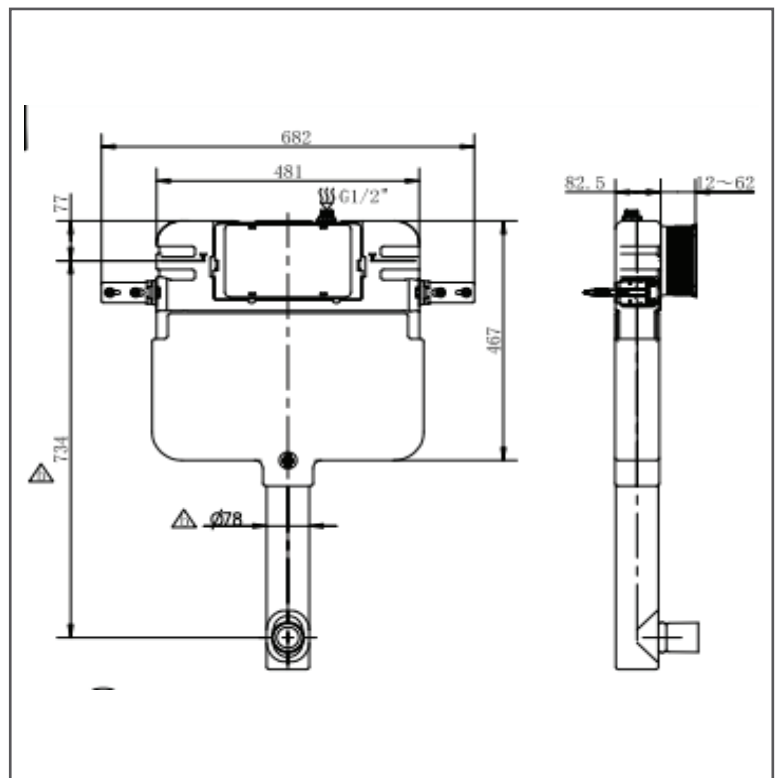
SPECIFICATIONS

- Water Use : 6L/3L
- Water Pressure : 0.25 MPa ~ 0.75 MPa
- Size : 682W x 467H mm

PARTS DESCRIPTION

- WH131MNF : Concealed Tank Without Frame

WH131MNF



Please consult, TOTO representative for more details.

All rights reserved by TOTO including but not limited to Improve & Change of Product Design, Specs or Availability at any time without prior notice