

TOTO Toilet

SP Wall-Hung Toilet

CW522MUNW1/TC512AW



DESIGN
AWARD
2020

GOOD
DESIGN

GREEN
GOOD DESIGN
AWARD
2016



FEATURES

- Sleek and Stylish Design
- TORNADO FLUSH for powerful flushing effect with less amount of water
- WATER SAVING
- CEFIONTECT technology; super smooth ion barrier glazing for a clean Toilet bowl

SPECIFICATIONS

- Water Use : 4.5/3L
- Shape : Square
- Flush System : TORNADO FLUSH
- Rough-in : 220 mm
- Size : 380W x 580D x 335H mm

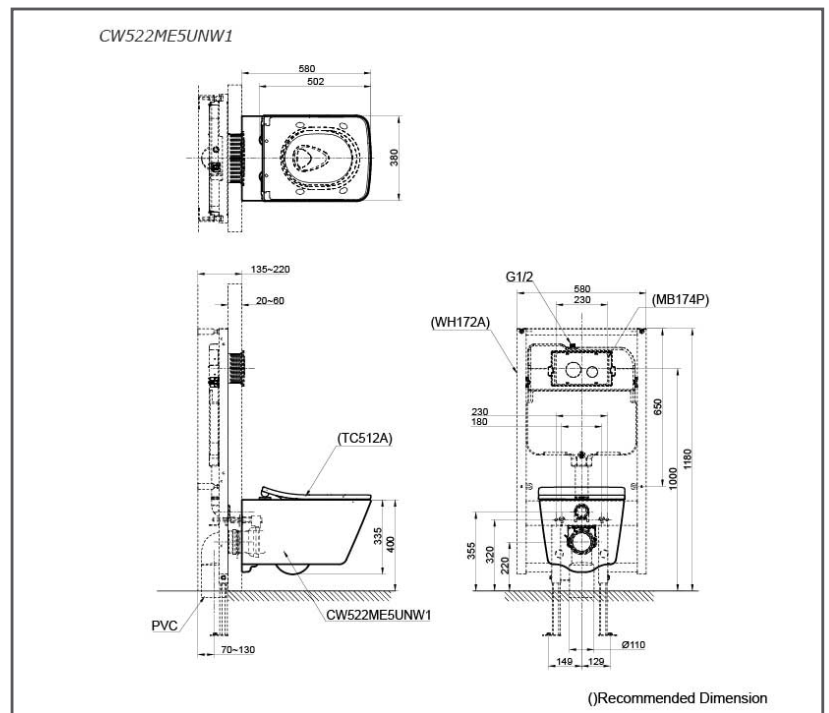
PARTS DESCRIPTION

- CW522MUNW1 : Wall-Hung Toilet
- TC512AW : Duroplast Seat & Cover(Soft Close)
- TX215C : Slip in connector
- WH172AT : Flush Tank

COLORS

White (CEFIONTECT)

CW522MUNW1/TC512AW



Please consult, TOTO representative for more details.

All rights reserved by TOTO including but not limited to Improve & Change of Product Design, Specs or Availability at any time without prior notice