

TOTO

SMART TOILET

NEOREST WX I (SILVER)

CW927PZT#NW1/
TCF95380GIN#NW1/
WH175AAT/ MB177M#S



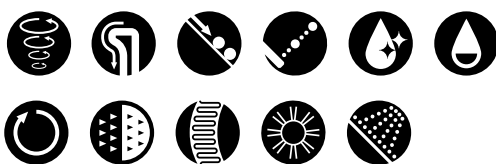
DESIGN
AWARD
2023



GOOD
DESIGN
AWARD
2023



reddot winner 2023



FEATURES

- New TORNADO FLUSH uses less water to product powerful streams of water that travels along a hairpin curve of new RIMLESS DESIGN bowl creating a 360 degree of cleaning that washes every spot.
- PREMIST a fine spray of mist making it difficult for dirt to adhere.
- EWATER+ not only keeps toilet bowl and nozzle clean by preventing bacterial with sanitizing effect but is also sprayed under the seat to prevent other accumulated waste, ensures a long-lasting cleanliness.
- Automatic operation: Lid opens, closes and toilet flushes when sensor is activated.
- AIR-IN WONER-WAVE uses air rich water droplets to produce comfortable cleaning sensation.
- HEATED SEAT with temperature control.
- Auto powerful DEODORIZER activates after every usage.
- Adjustable WARM AIR DRYING.

SPECIFICATIONS

• Flush System	:	TORNADO FLUSH
• Water Use	:	4.5L / 3.0L
• Rough-in	:	220 mm
• Bowl Shape	:	D Shape
• Water Pressure	:	0.25MPa~0.75MPa
• Power Rating	:	220~240V, 50/60Hz
• Power Supply	:	Direct, Concealed
• Power Consumption	:	848~859W
• Max. Power Consumption	:	1466~1480W
• Size	:	449W x 675D x 447H mm

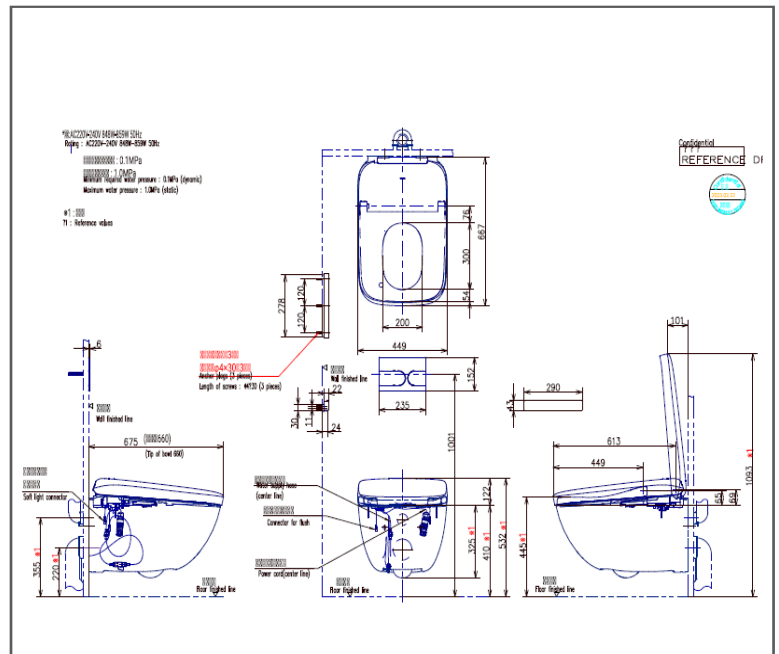
Recommended to Use

1. Voltage Stabilizer (2.0 KVA) against to avoid Power Fluctuation.
2. Clean Treated water - Degree of Hardness < 50ppm or TDS < 300 ppm
3. Automatic Water Pressure Pump - Min. Required Pressure - 2.50 Bar (0.25 MPa)

PART DESCRIPTION

- CW927PZT#NW1 : NEOREST WX-I Wall Hung Bowl
- TCF95380GIN#NW1 : NEOREST WX-I WASHLET
- WH175AAT : Concealed Tank, Full frame & Auto Flush
- MB177M#S : Flush Panel (Dual Flush) ABS Silver

CW927PZT#NW1/ TCF95380GIN#NW1/ WH175AAT/ MB177M#S



Please consult, TOTO representative for more details.

All rights reserved by TOTO including but not limited to Improve & Change of Product Design, Specs or Availability at any time without prior notice